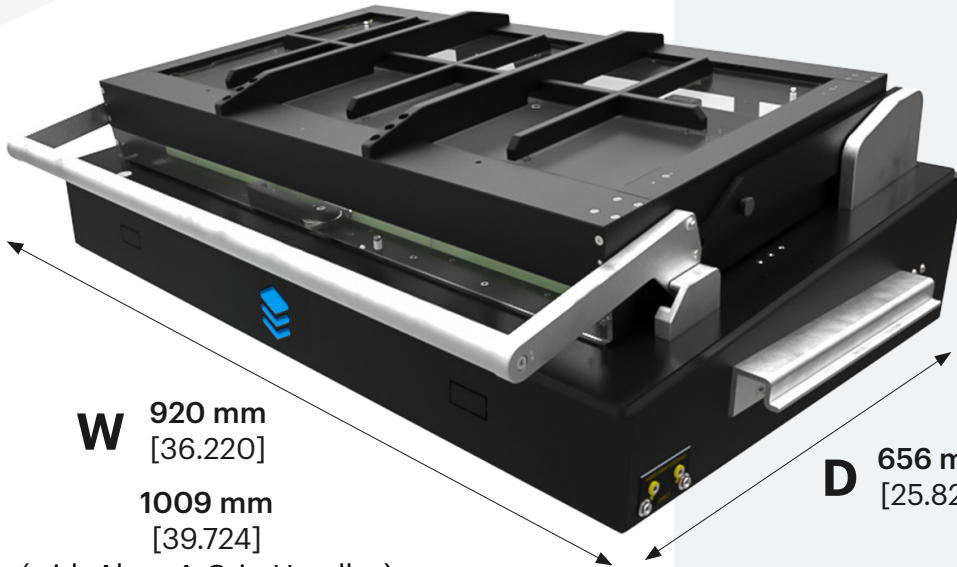


## Mechanical Fixture Kit

# MFS-D5 series

### Equip ND-MFS-D5-EXCH-PYL Mechanical Fixture



**W** 920 mm  
[36.220]

1009 mm  
[39.724]

(with Alum-A-Grip Handles)

**H** 300 mm  
[11.811]

**D** 656 mm  
[25.827]

The new single well **Precitronic Mechanical Test Fixture (MFS)**, complies to most demanding In-Circuit and Functional Testing Challenges.

**Interface plate cover** is placed on back of Fixture, which can be freely customized according customer's requirements.

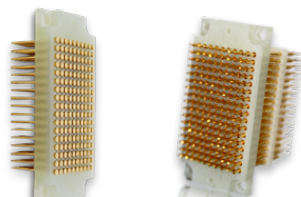
Due to its **robust design** this Fixture can easily handle up to **1000 Test Points\*** without bending problems!

### Technical Features

- › External Dimension (width x depth x height) with Handles:  
**1009 mm x 656 mm x 300 mm**  
[39.724 in x 25.827 in x 11.811 in]
- › Usable Area: **640 mm x 288 mm** [25.196 in x 11.339 in]
- › Two Independently Operated Cover Units
- › Big inner space for Optional Hardware
- › Ergonomic Handle for easy closing
- › ESD Safe & Easy Maintenance
- › Quick Exchange System - Modular Fixture
- › Alum-A-Grip Handles for transport and lift

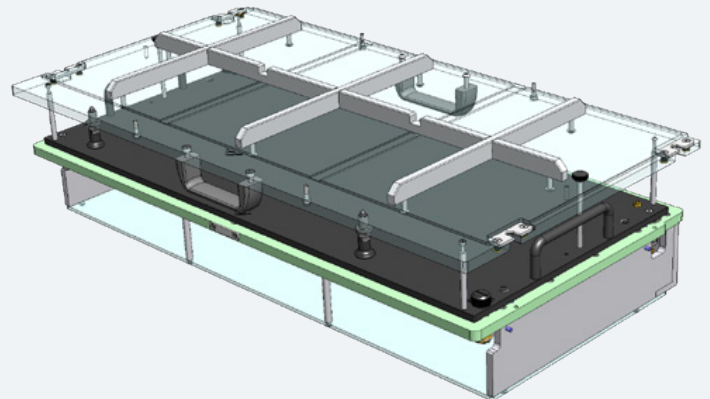


Engraving Unit



170 Pole Pylon Block

### Equip ND-EXCH-D5-PYL Exchangeable Kit with Pylon Interface



### Optional Hardware for Fixture Customizing

- › Reed Relay Switch used as cover close sensor
- › MU S001 D2 M12 x 1 PCB Engraving Unit
- › CEM-1 Assembly Plate to Fixture housing bottom
- › Digital Test Cycle Counter
- › Safety Switch for High-Voltage Test
- › Inductive Sensor to check Handle Position (to control actuation of safety switch)
- › Pneumatic or Solenoid Cover Lock set

\*If standard 2 N Test Probes are used

