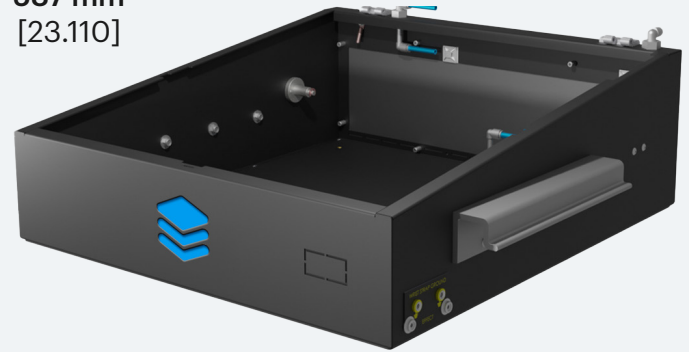
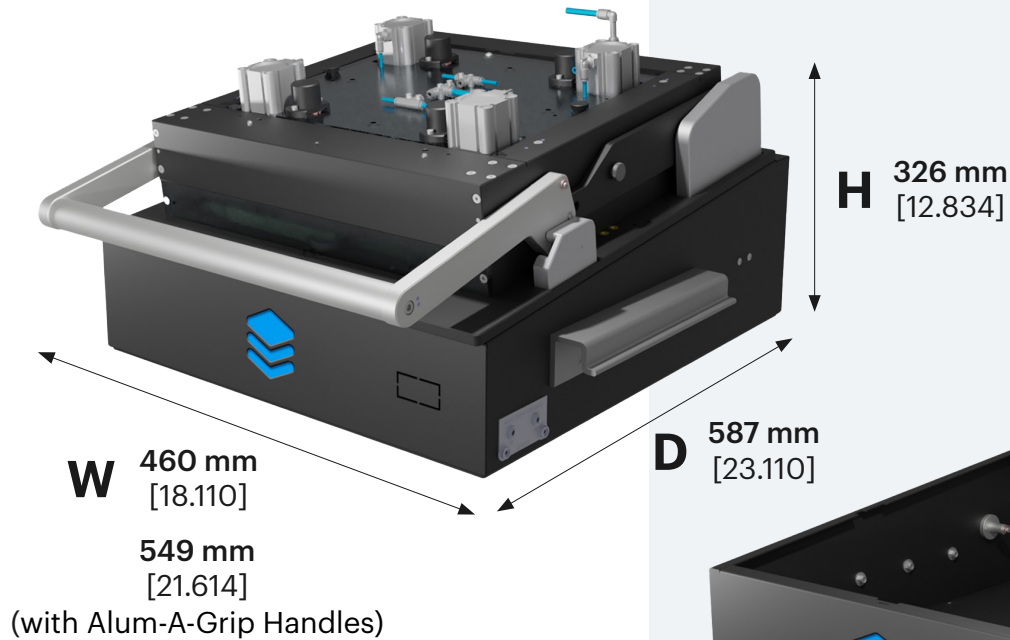


Optional Construction ND-MFS-D3-PYL with

ND-EXCH-D3-DS-PYL

Dual Stage Exchangeable Kit with Pylon Interface

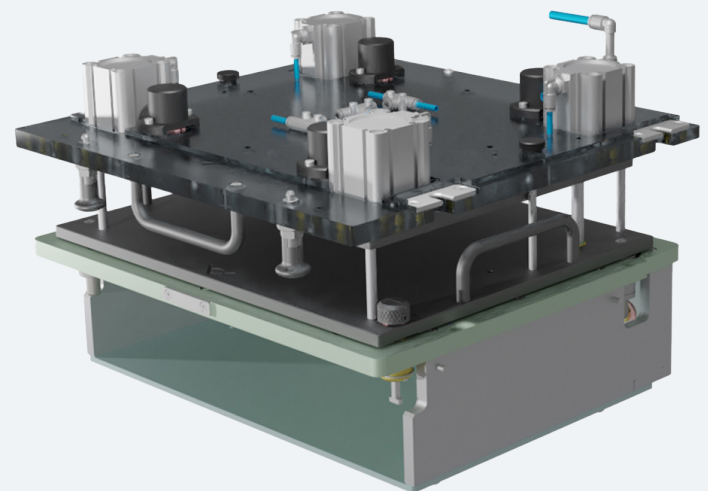
The new single well Precitronic Mechanical Test Fixture ND-MFS-D3-PYL, customized with ND-EXCH-D3-DS-PYL Exchangeable Kit, complies to demanding Dual Stage Testing challenges.



Technical Features

- › External Dimension (width x depth x height) with Handles:
549 mm x 587 mm x 280 mm
[21.614 in x 23.110 in x 11.024 in]
- › Usable Area: 224 mm x 178 mm [8.819 in x 7.007 in]
- › Maximum Force: 800 N
- › Big inner space for Optional Hardware
- › Ergonomic Handle for easy closing
- › Exchangeable Kit is prepared with Pylon Interface Blocks
- › ESD Safe & Easy Maintenance
- › Quick Exchange System - Modular Fixture
- › Alum-A-Grip Handles for transport and lift

For Compatibility, the Mechanical Test Fixture must be customized with **ND-EXCH-D3-DS-PYL-500** Dual Stage Build Up Set



Equip **ND-EXCH-D3-DS-PYL**
Exchangeable Kit with Pylon Interface

