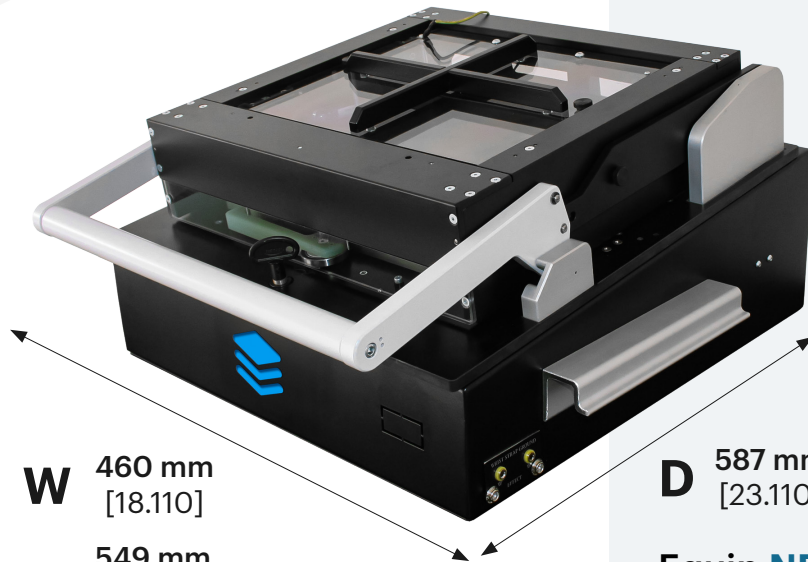


## Mechanical Fixture Kit

# MFS-D3 series

### Equip ND-MFS-D3-EXCH-PYL Mechanical Fixture



**W** 460 mm  
[18.110]

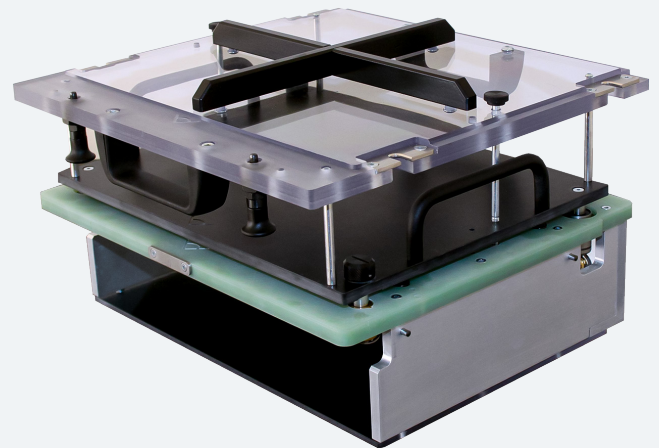
549 mm  
[21.614]

(with Alum-A-Grip Handles)

**H** 280 mm  
[11.024]

**D** 587 mm  
[23.110]

### Equip ND-EXCH-D3-PYL Exchangeable Kit with Pylon Interface

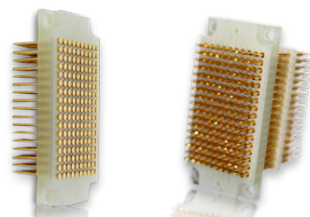


#### Technical Features

- › External Dimension (width x depth x height) with Handles:  
549 mm x 587 mm x 280 mm  
[21.614 in x 23.110 in x 11.024 in]
- › Usable Area: 273 mm x 218 mm [10.748 in x 8.583 in]
- › Big inner space for Optional Hardware
- › Ergonomic Handle for easy closing
- › Exchangeable Kit is prepared with Pylon Interface Blocks
- › ESD Safe & Easy Maintenance
- › Quick Exchange System - Modular Fixture
- › Alum-A-Grip Handles for transport and lift



Engraving Unit



170 Pole Pylon Block

#### Optional Hardware for Fixture Customizing

- › Reed Relay Switch used as cover close sensor
- › MU S001 D2 M12 x 1 PCB Engraving Unit
- › CEM-1 Assembly Plate to Fixture housing bottom
- › Digital Test Cycle Counter
- › Safety Switch for High-Voltage Test
- › Inductive Sensor to check Handle Position (to control actuation of safety switch)
- › Pneumatic or Solenoid Cover Lock set

\*If standard 2 N Test Probes are used

