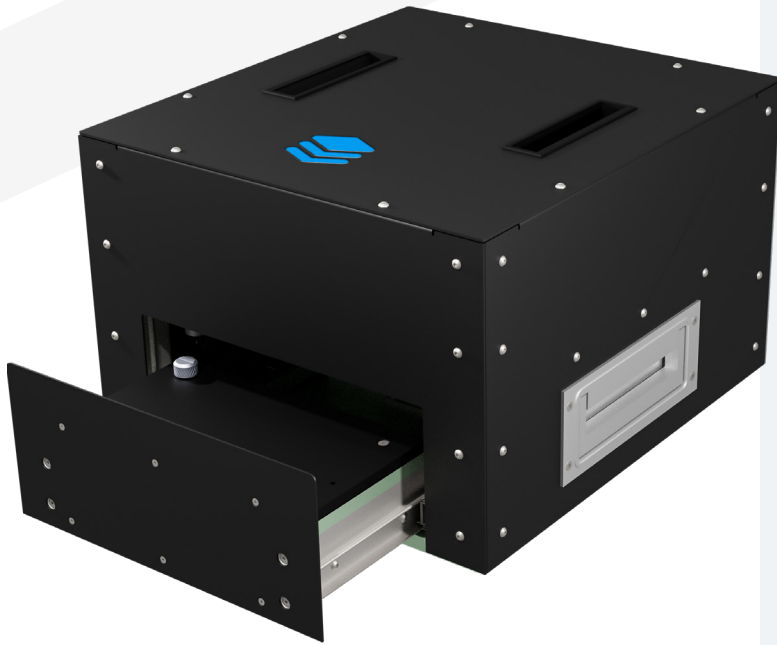


## Drawer Fixture Kit

# DFS-E190X90-EXCH-PYL

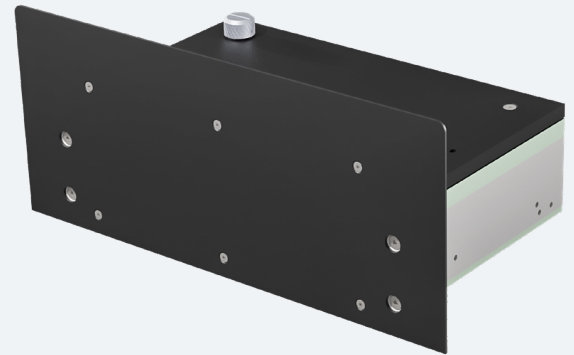


The NEW, Innovative Drawer Type Fixture (DFS) from MTest Solutions is ready to meet challenging In-Circuit (ICT), Functional (FCT) and End of Line (EOL) Testing Tasks.

- › Up to 170 N Maximum Load for Secure PCB Contacting
- › Automatic Drawer Closing / Opening
- › Single (Bottom) Side Testing
- › Quick Fixture Kit Exchange
- › Customizable Pylon Block Interface
- › Single + Dual Stage Testing

### Technical Features

- › External Dimension (width x depth x height):  
**395 mm x 429 mm x 266 mm**  
[15.551 in x 16.889 in x 10.472 in]
- › Usable Area (EXCH-PYL):  
**190 mm x 90 mm**  
[7.480 in x 3.543 in]
- › Top Side Clearance:  
Max. 24 mm [0.945 in]
- › Protection:  
ESD Safe
- › Compressed Air:  
Standard 6 Bar in accordance with DIN ISO 8573 3.4.5
- › Internal Interface:  
2 pcs ITA-ST-85-KT06 (or other Types) Pylon Block Interface on the Exchangeable Drawer Kit
- › Fixture Interface:  
Customizable Plate for any Type at back side of the Fixture
- › Color:  
Standard Black or Custom Painted (RAL Standard)
- › Weight:  
approx. 23 kg [50.70 lbs]



### Exchangeable Drawer Kit

